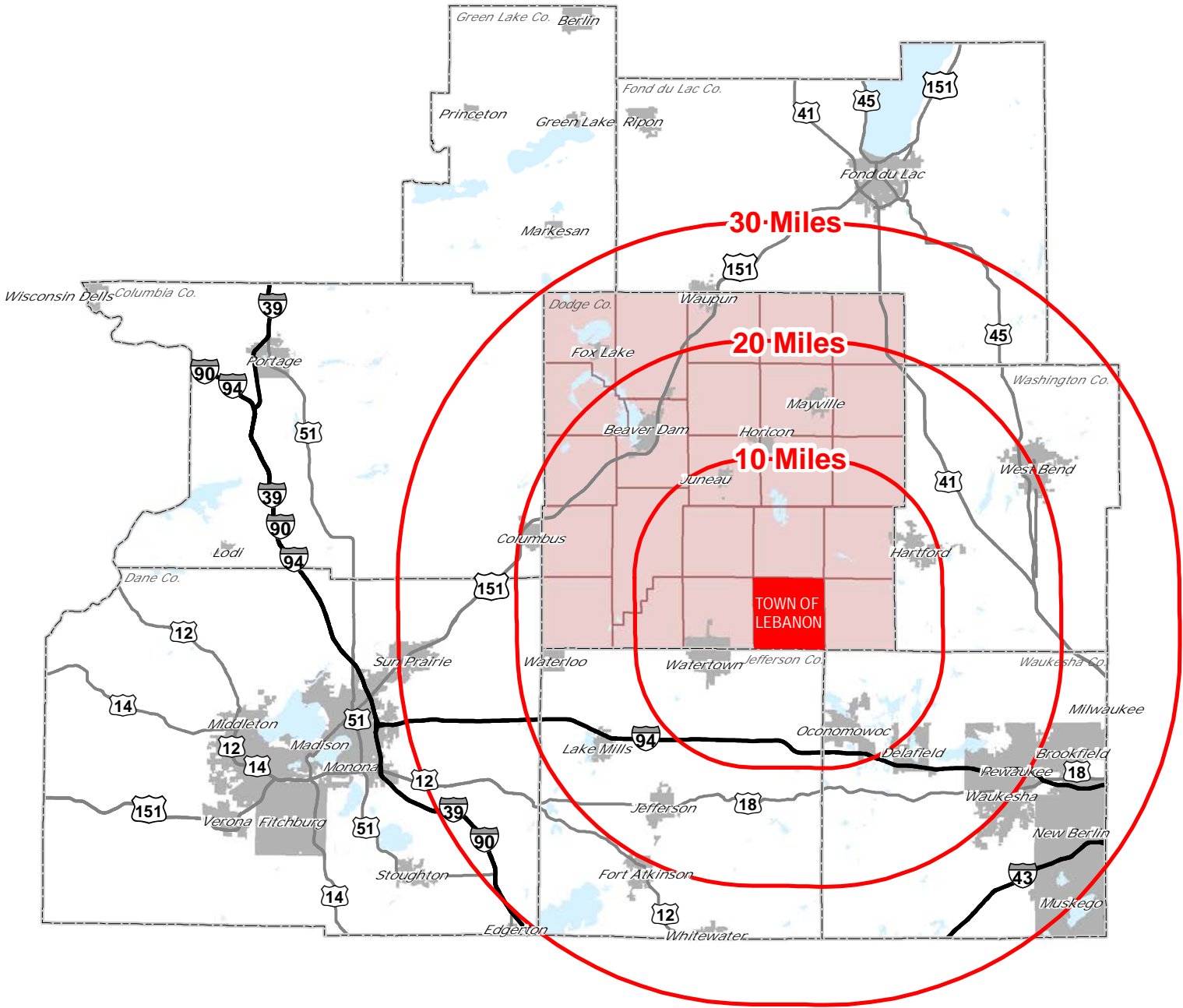


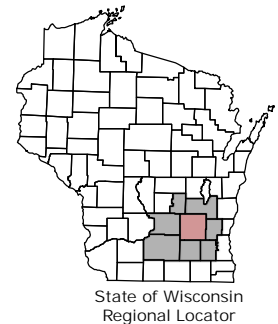
Map 1-1 Regional Setting Town of Lebanon, Dodge County, Wisconsin



	Interstate Highways		Cities
	US Highways		Major Lakes
	County Boundaries		Town of Lebanon
	Dodge County		Proximity Radius
	Dodge County Town Boundaries		

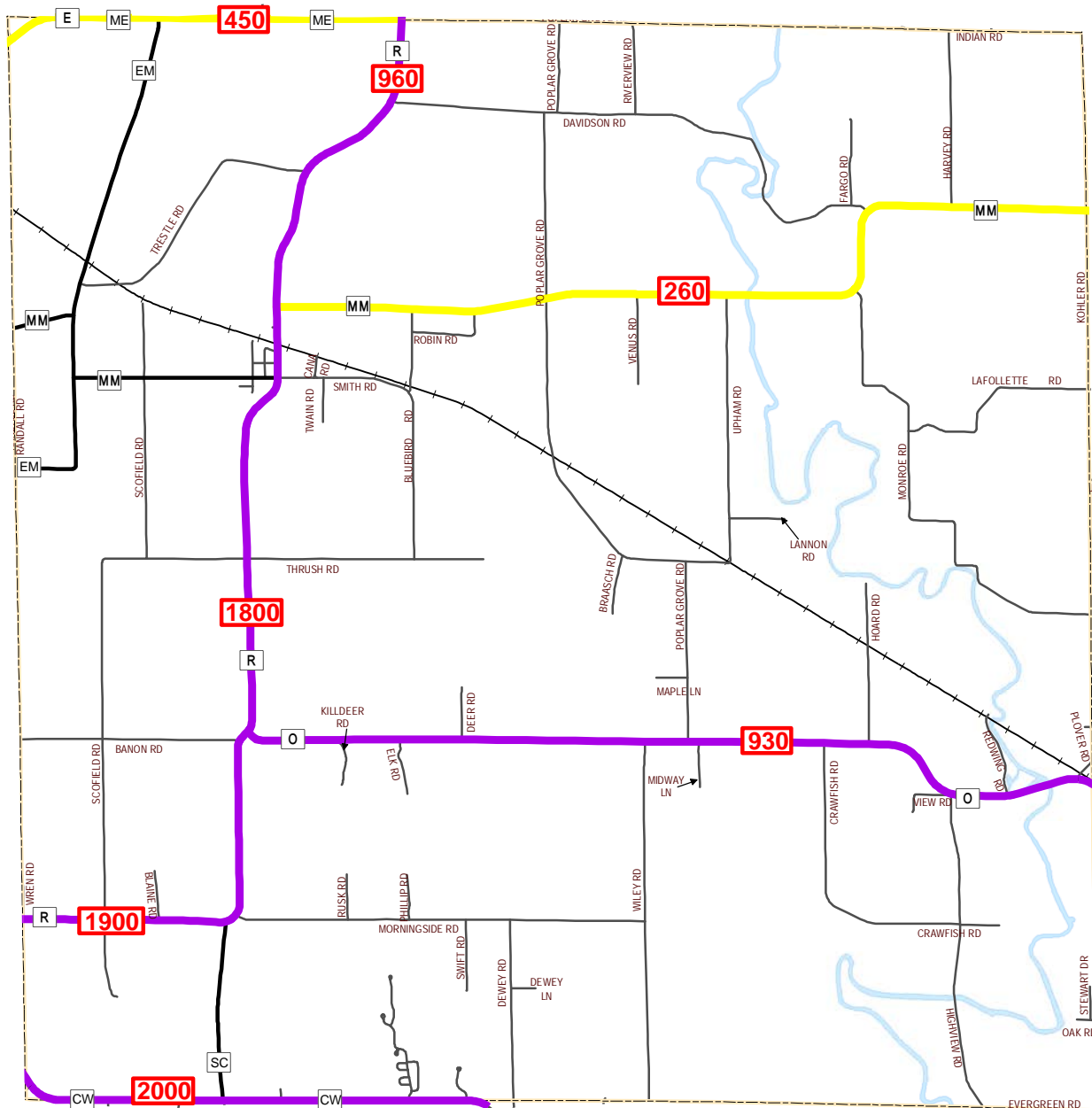
0 2.5 5 10 15 20 Miles

Dodge County
Land Resources & Parks
Department



Source: Dodge County Land Resources & Parks Department, March 2013

Map 3-1, Functional Classification of Highways, Location of Railroads, and Average Daily Traffic Counts Town of Lebanon, Dodge County, Wisconsin



Legend

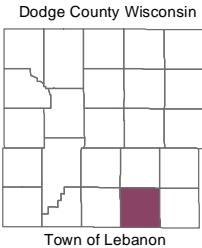
- County Highway
- Local Road
- Railroad
- Town Boundary
- Waterbodies

Functional Roadway Classification

- Major Collectors
- Minor Collectors
- Average Daily Traffic Counts 2011



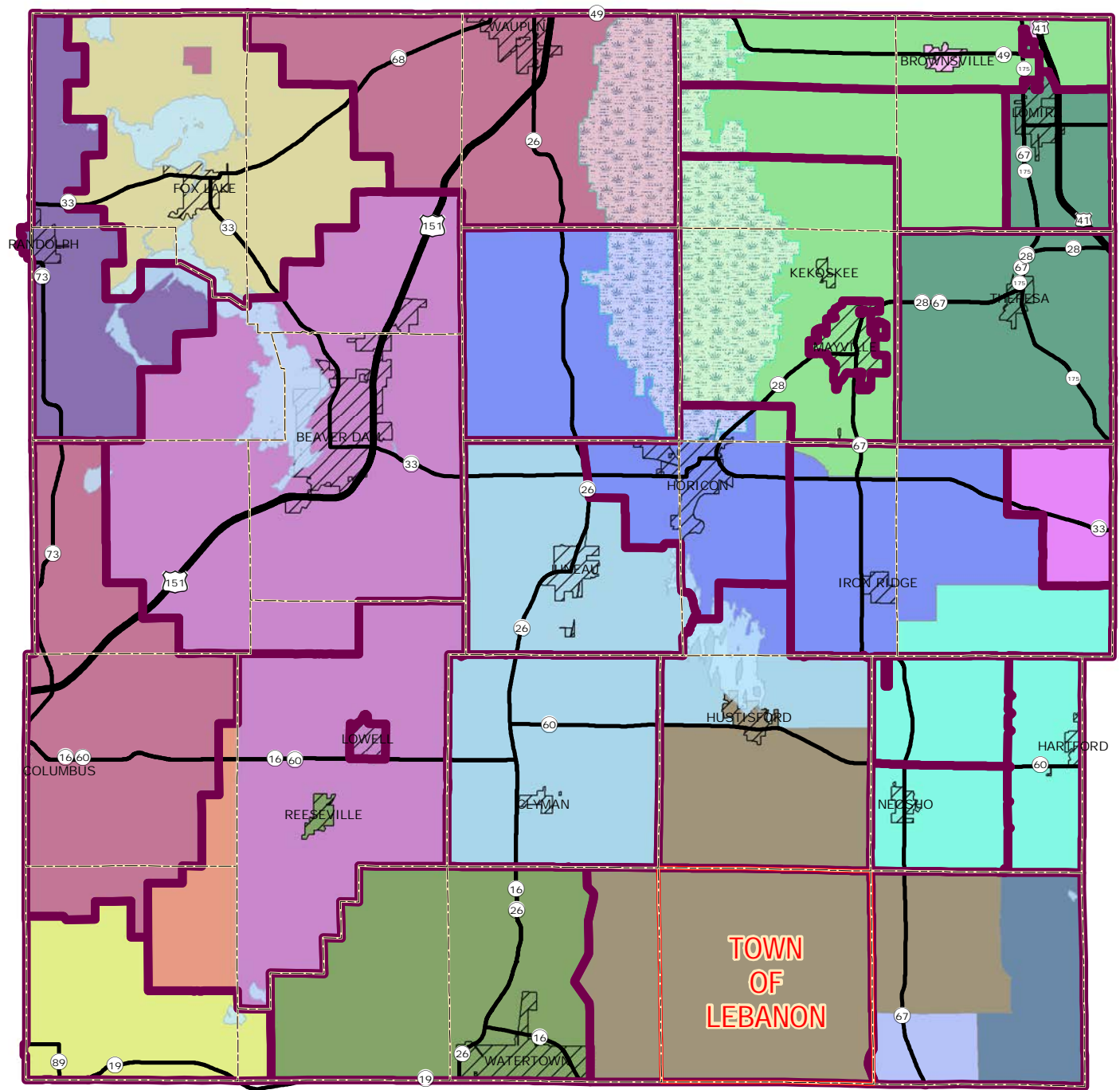
Dodge County
Land Resources and Parks
Department



Source: Dodge County Land Resources and Parks Department, March 2013
2011 DOT data

0 0.4 0.8 1.6 Miles

Map 4-1, Fire Emergency and Medical Emergency Service Areas Dodge County, Wisconsin



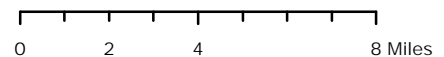
Legend	
	U.S. Highway
	State Highway
	Town Boundaries
	Municipalities
	Horicon Marsh
	Lake
	Town of Lebanon
	Fire Emergency Service Areas
	EMS
	Allenton
	Beaver Dam
	Columbus/Lifestar
	Fond du Lac
	Fox Lake
	Hartford
	Horicon
	Juneau
	Lebanon
	Lifestar
	Mayville
	Oconomowoc
	Randolph
	Stone Bank
	Theresa
	Waterloo
	Watertown



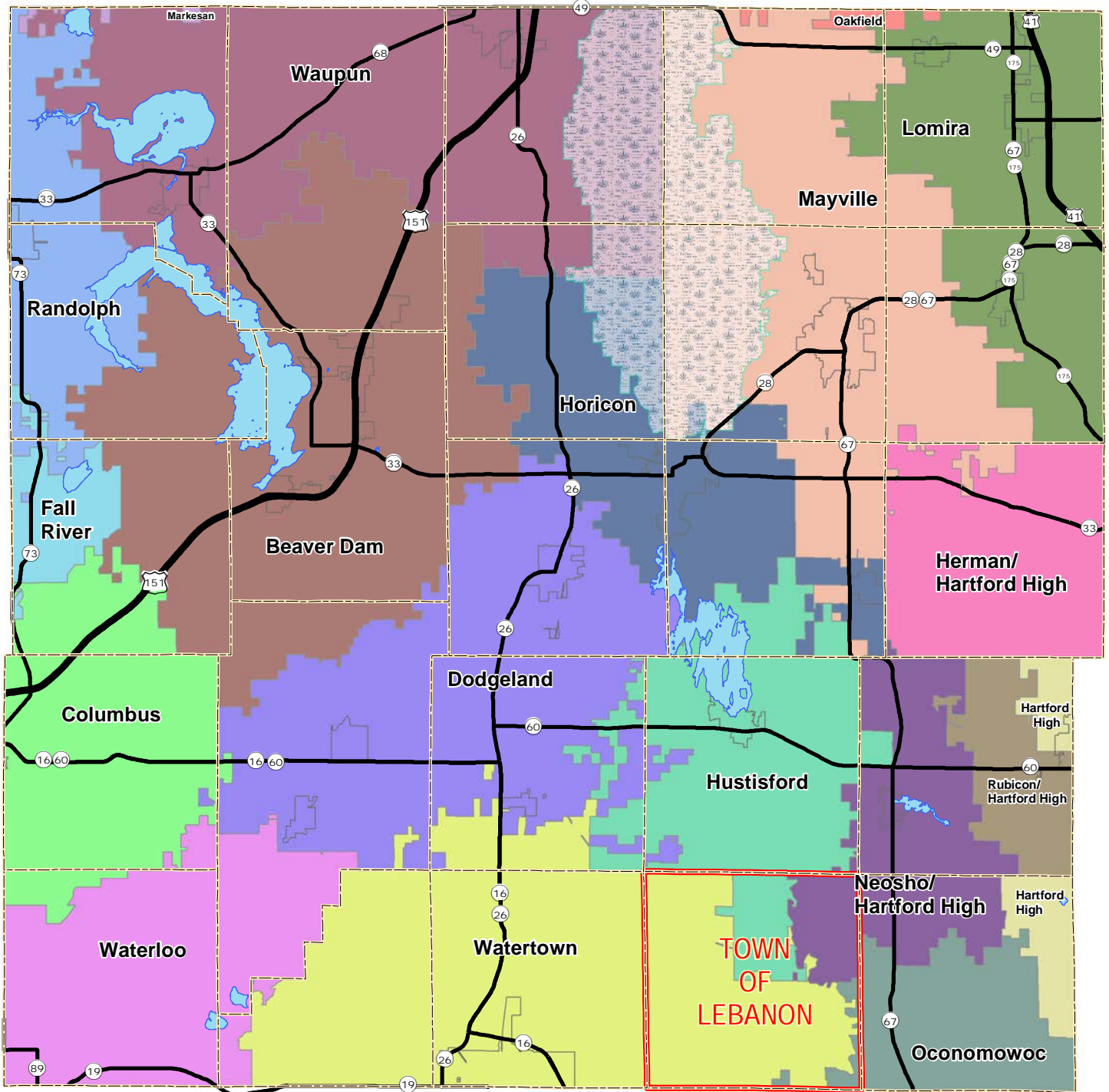
Dodge County
Land Resources and Parks
Department



Source: Dodge County Land Resources and Parks Department, March 2013
Dodge County Sheriff's Department, March 2013



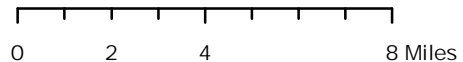
Map 4-2, School District Boundaries Dodge County, Wisconsin



Legend		School District	
	U.S. Highway		BEAVER DAM
	State Highway		COLUMBUS
	Town Boundaries		DODGELAND
	Municipalities		FALL RIVER
	Horicon Marsh		HARTFORD J 1
	Lake		HERMAN #22
			HORICON
			HUSTISFORD
			LOMIRA
			MARKESAN
			MAYVILLE
			NEOSHO J 3
			OAKFIELD
			OCONOMOWOC AREA
			RANDOLPH
			RUBICON J 6
			WATERLOO
			WATERTOWN
			WAUPUN

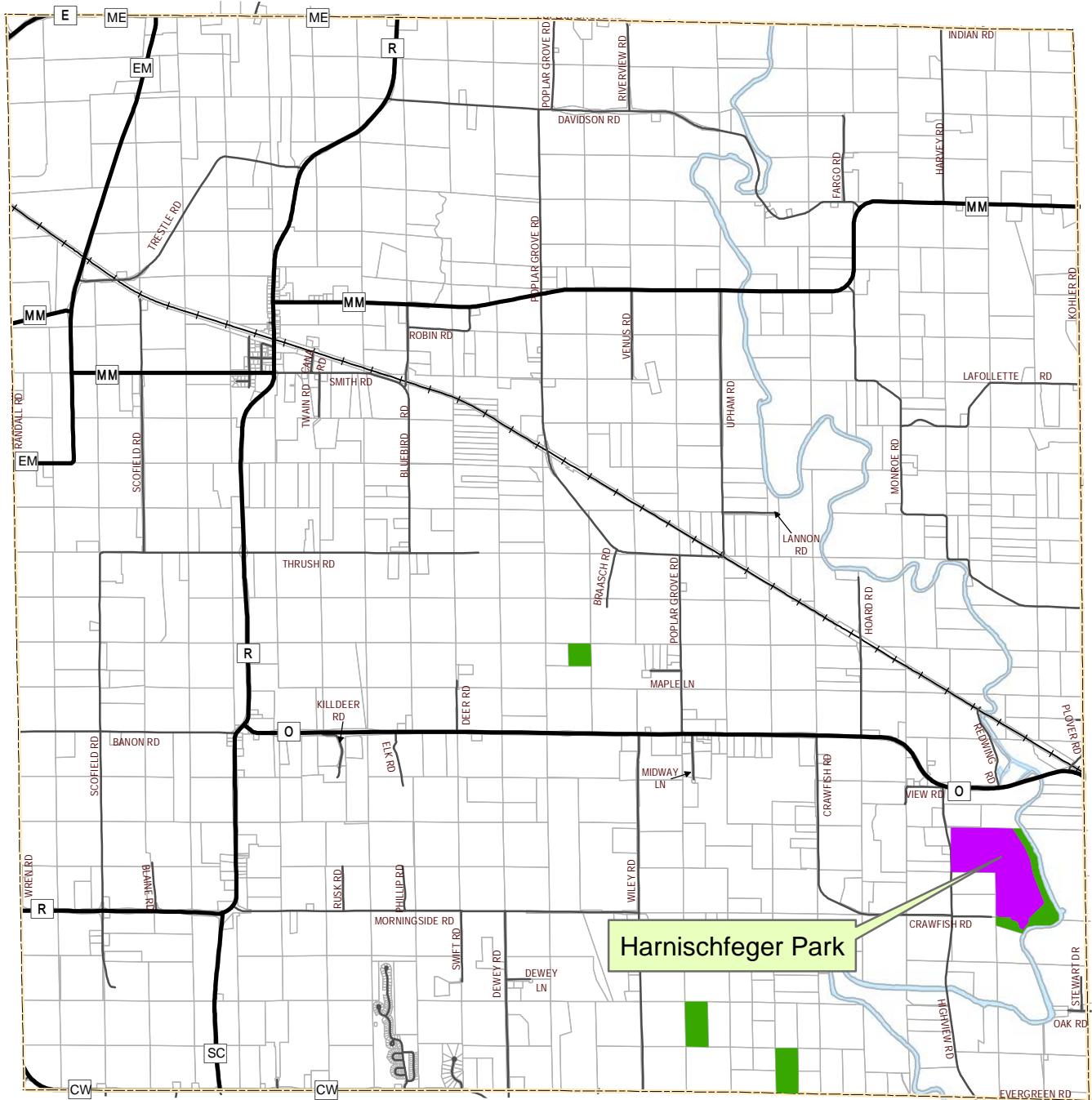


Dodge County
Land Resources and Parks
Department



Source: Dodge County Land Resources and Parks Department, March 2013

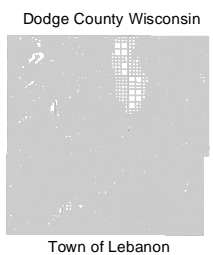
Map 4-3, County and State Recreation Areas Town of Lebanon, Dodge County, Wisconsin



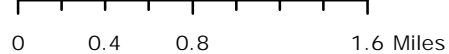
	County Road		County Recreation Areas
	Town Road		Federal and State Owned Land
	Town Boundaries		Waterbody
	Tax Parcels		



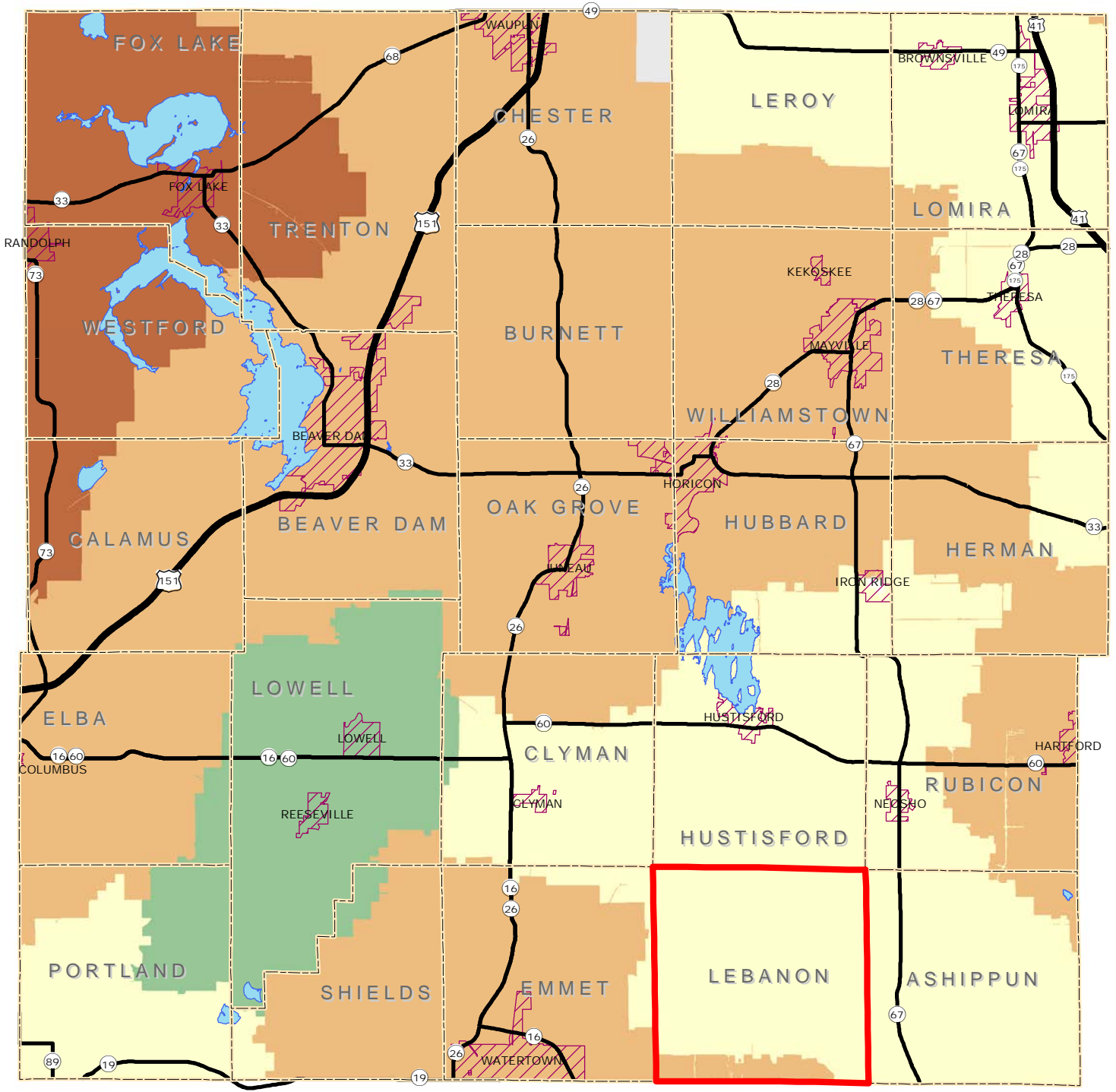
Dodge County
Land Resources and Parks
Department



Source: Dodge County Land Resources and Parks Department, March 2013



Map 4-4, Telephone Service Providers Dodge County, Wisconsin



Legend

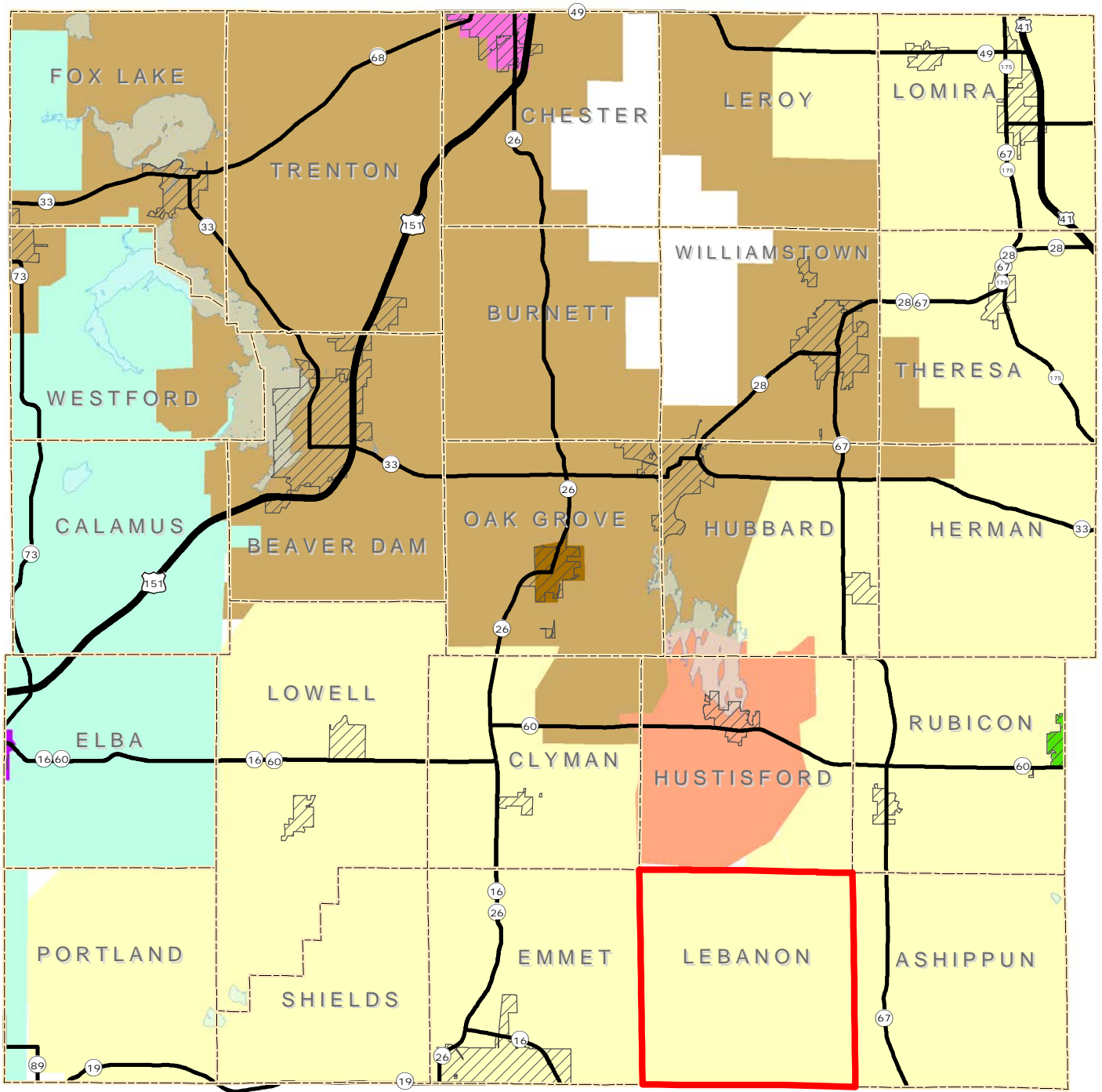
	U.S. Highway		Town of Lebanon
	State Highway		Century Tel, Inc.
	Town Boundaries		AT&T
	Municipalities		Telephone and Data Systems, Inc.
	Lake		Unassigned Territory
			Verizon North, Inc.

Dodge County
Land Resources and Parks
Department

0 2 4 8 Miles

Source: Dodge County Land Resources and Parks Department, March 2013
 Derived from Wisconsin Department of Administration maps dated October 2010

Map 4-5, Electric Utilities Service Areas Town of Lebanon, Dodge County, Wisconsin



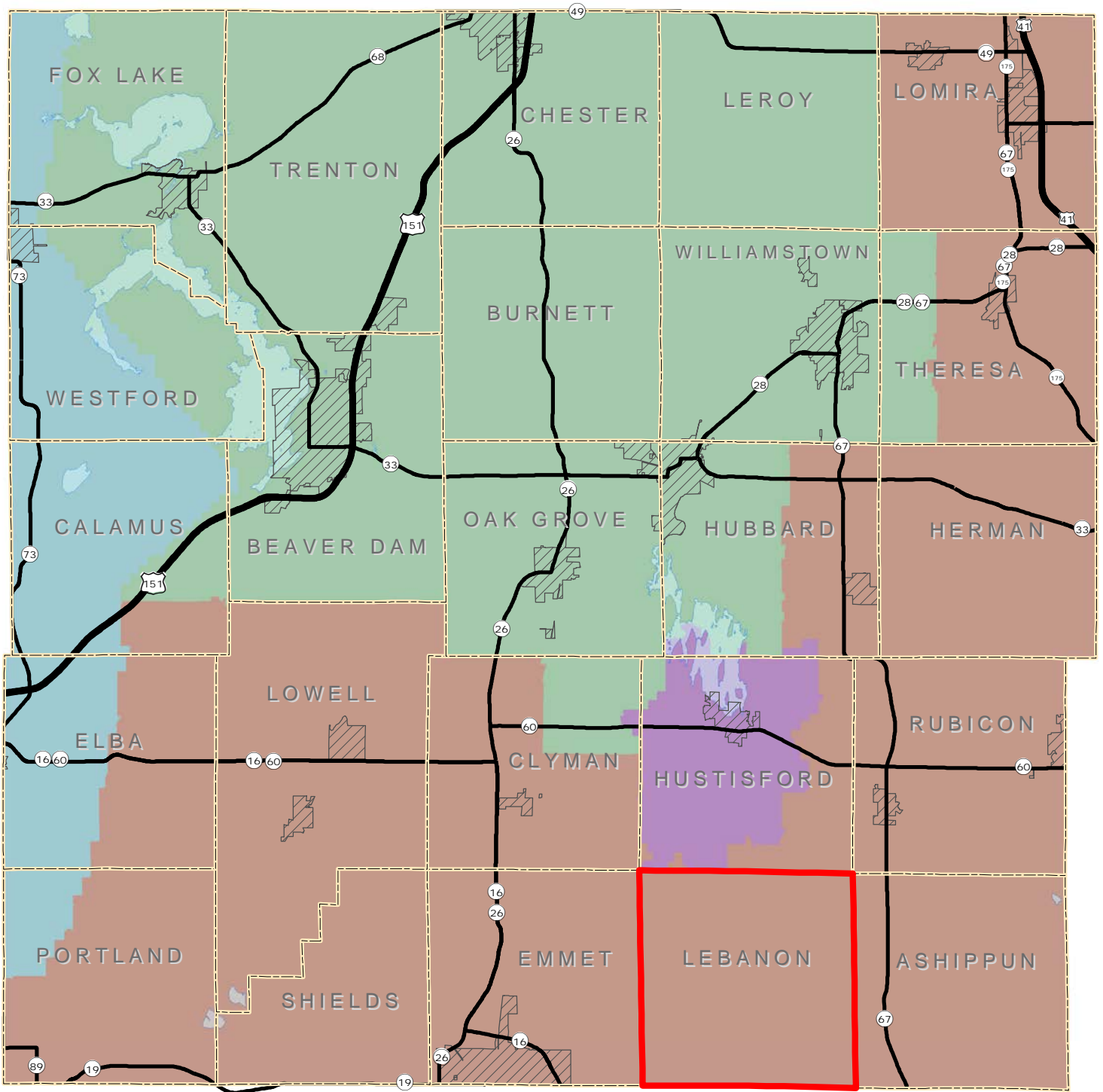
Legend	
	U.S. Highway
	State Highway
	Lake
	Town of Lebanon
	Town Boundary
	City or Village
	COLUMBUS WATER & LIGHT DEPT
	HARTFORD UTILITIES
	HUSTISFORD UTILITIES
	JUNEAU UTILITY COMMISSION
	WAUPUN PUBLIC UTILITIES
	ADAMS-COLUMBIA ELECTRIC COOPERATIVE
	WISCONSIN ELECTRIC POWER CO.
	WISCONSIN POWER & LIGHT

Dodge County
Land Resources and Parks
Department

Source: Dodge County Land Resources and Parks Department, March 2013
Service Areas derived from WI Public Service Commission 2013 Data



Map 4-5, Electric Utilities Service Areas Town of Lebanon, Dodge County, Wisconsin

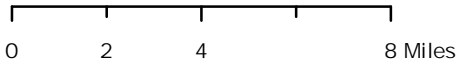


Legend

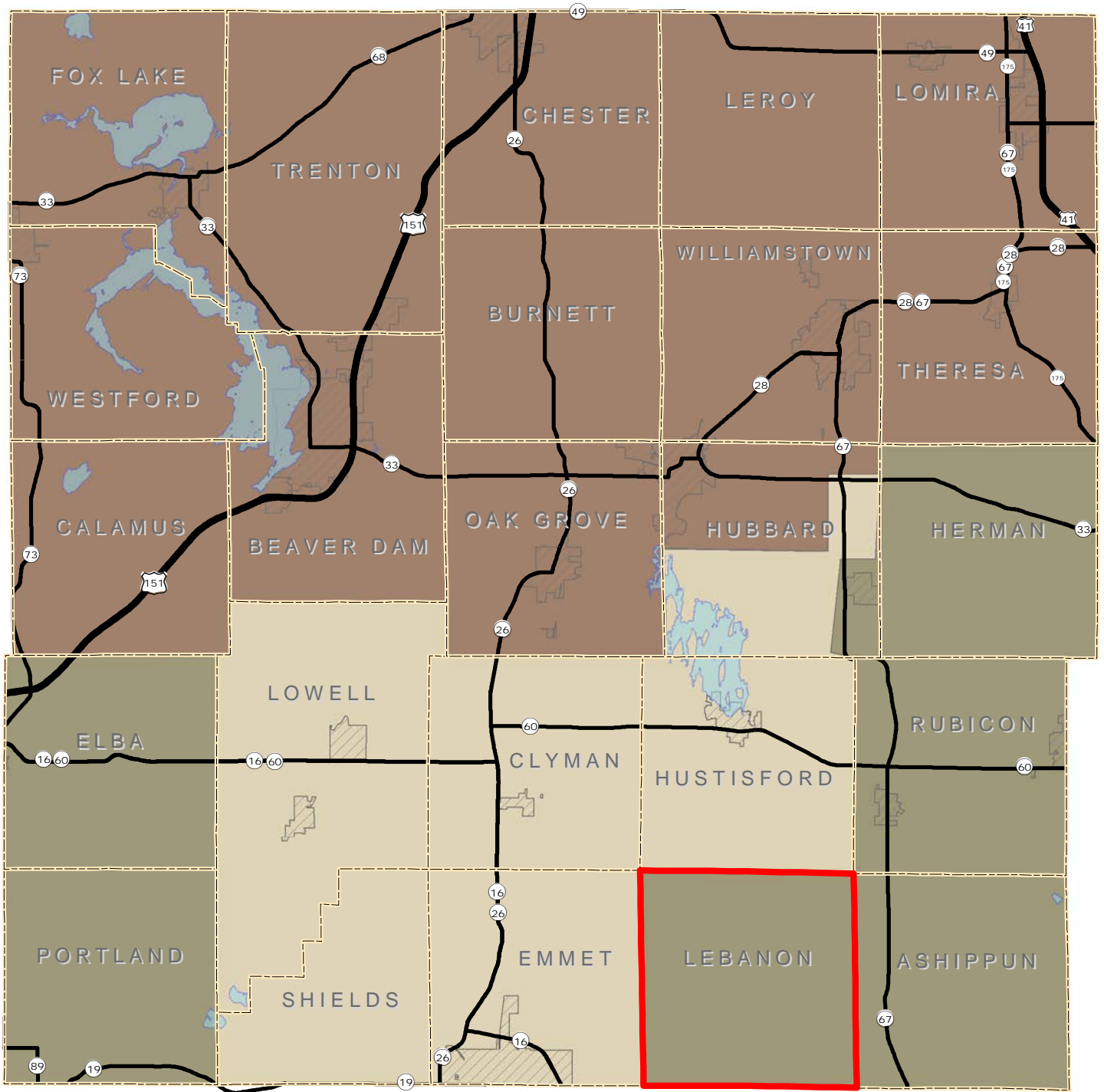
	U.S. Highway	Municipalities	Electric Service
	State Highway		
	Lake		

Dodge County
 Land Resources and Parks
 Department

Source: Dodge County Land Resources and Parks Department, March 2013
 Derived from Wisconsin Department of Administration maps, Electric dated April 2010, Hustisford Utilities provided data for their boundaries, December 2007



Map 4-6, Natural Gas Service Providers Town of Lebanon, Dodge County, Wisconsin



Legend			
	U.S. Highway		Natural Gas Service
	State Highway		Wisconsin Power & Light Company
	County Highway		Wisconsin Electric Power Company
	Lake		Wisconsin Gas Company
			Town of Lebanon
			Town Boundary
			City or Village

Dodge County
Land Resources and Parks
Department

Source: Dodge County Land Resources and Parks Department, March 2013
Service areas derived from WI Public Service Commission 2013 data

